

Turning your waste into energy -

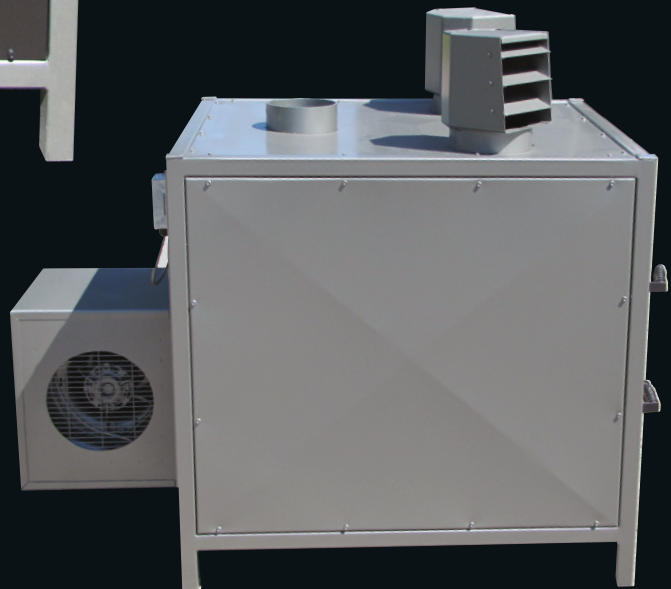
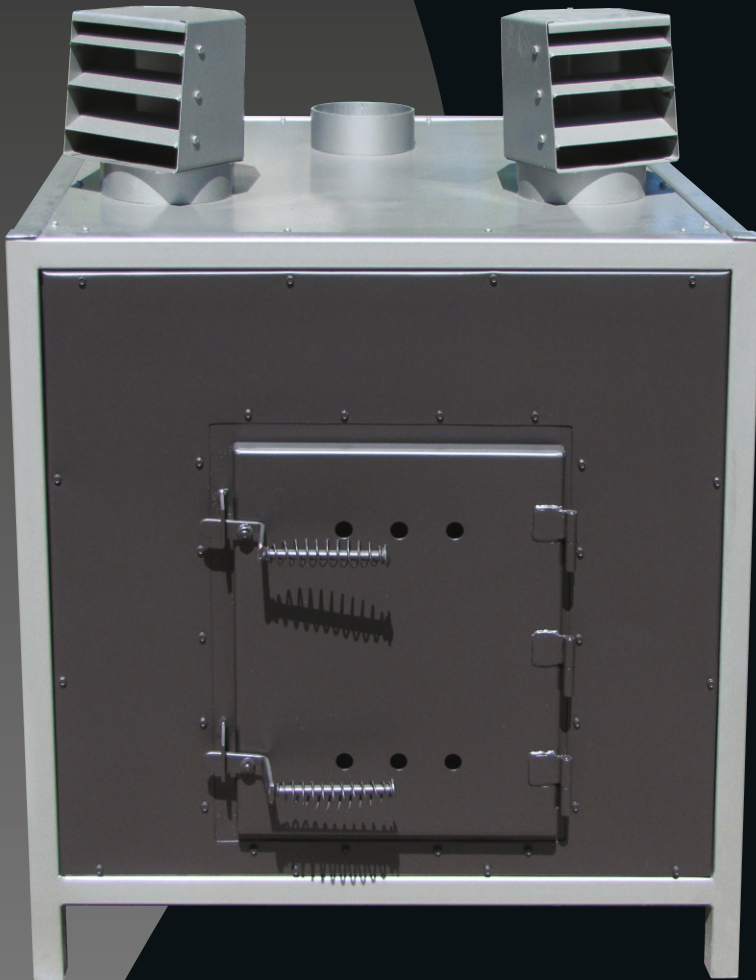
WT2 Heater Unit

The WT2 is the entry level unit and a very popular choice for the smaller workshop.

The small footprint, ease of installation and being virtually maintenance free make it the obvious choice for workshops up to around 2500ft².

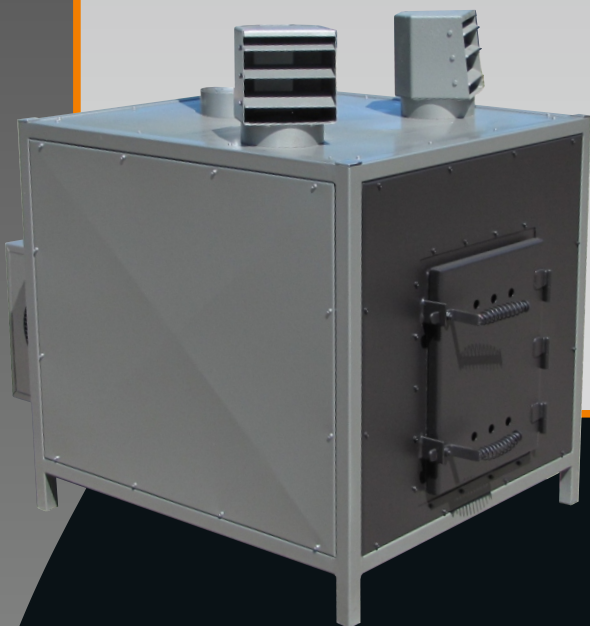
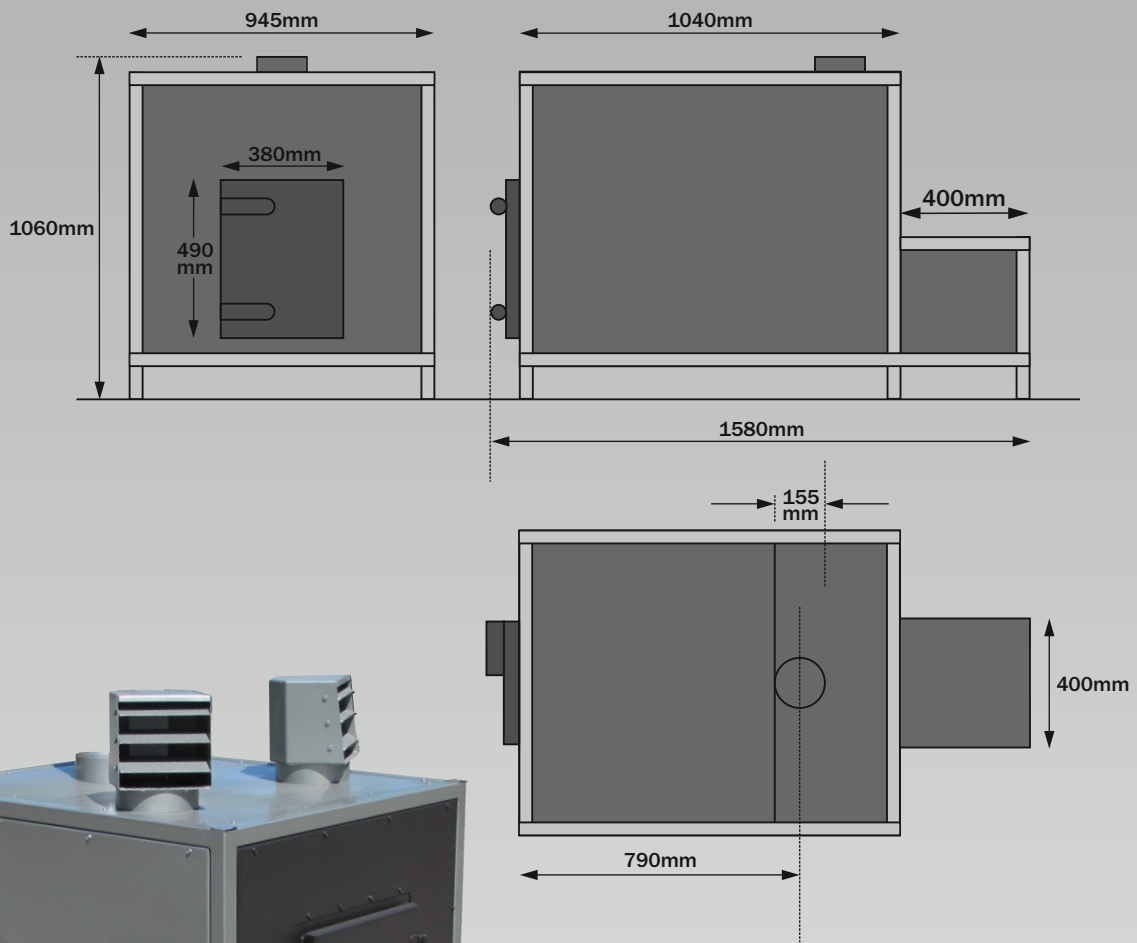
Manufactured using the same high quality materials as the larger WT range of heaters means the customer gets exceptional value without paying through the nose.

The WT2 is thermostatically controlled and will burn approximately 200-350kg per week.



**WOOD WASTE
TECHNOLOGY**

The UK's Leading Manufacturer of Wood Waste Heaters



WT2 Heater Specifications

Heat Output	25 Kw/hour – 85,300 Btu/hour
Air Volume	2730 M ³ /hour
Weight	310 Kg



**WOOD WASTE
TECHNOLOGY**

info@woodwastetechnology.com

www.woodwastetechnology.com

Wood Waste Technology Ltd
Units 1 and 2 Drummond Road
Astonfields Industrial Estate
Stafford ST16 3HJ

Tel: 01785 250400

Fax: 01785 255199

The UK's Leading Manufacturer of Wood Waste Heaters